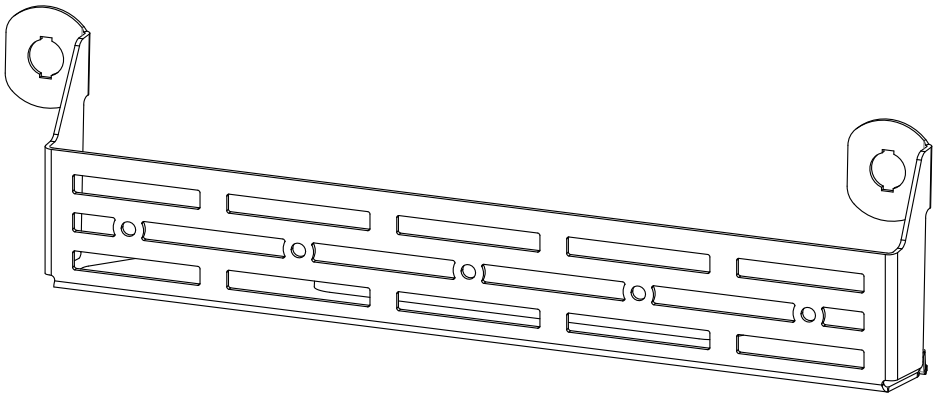





FITTING INSTRUCTIONS FOR

Rear Door Caddy

SKU	COMPATIBILITY
<i>KS0556/560</i>	<i>Toyota Prado 150, Lexus GX 460</i>



Included contents	
QTY	COMPONENT
1	Rear Door Caddy

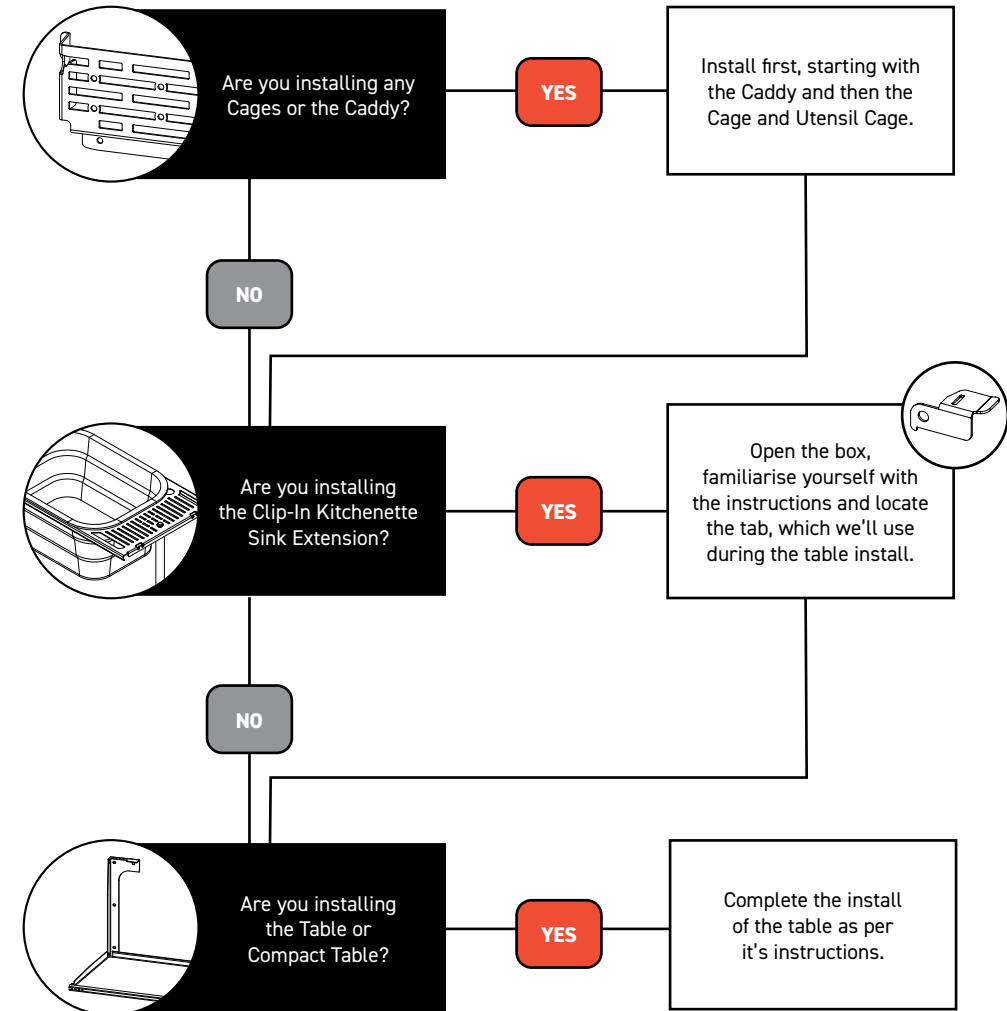
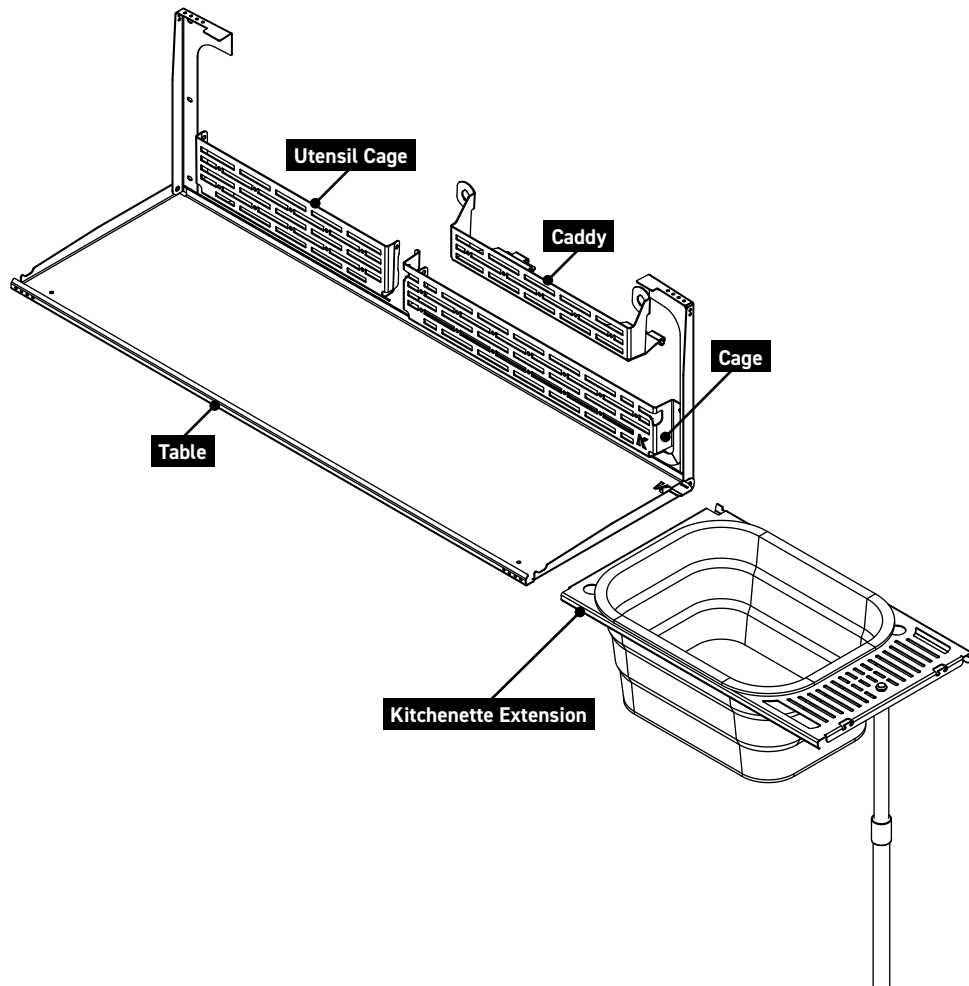
 Time	5 mins / Few swigs of beer
---	----------------------------

Scan the **QR code** to watch the video installation guide,
or for further information contact KAON on **07 3180 1470** or **info@kaon.com.au**



It all works together.

All our rear door products work together, but there is a certain order to installing.
Installing multiple products? Here's the the best way for your configuration.



With the order sorted, let's get to the good part: installing. →

Let's get to work.

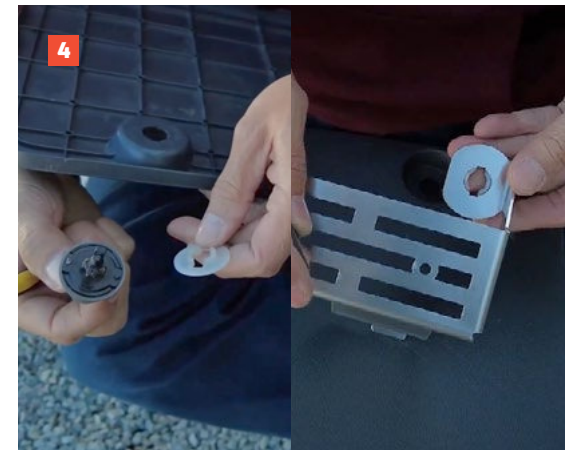
Vehicle Preparation

1. Ensure you are following the install order on page 3. If you are also installing the Rear Door Cage for the first time, we recommend installing the Caddy first.

If you have a KAON Rear Door Cage already installed, you will need to remove the top two screws. This allows you to pull the Cage away from the door, providing enough room to install the Caddy.

Caddy Preparation

2. First things first, we need to remove the knobs from the factory hatch cover. If you've lost yours, a trip to the wreckers may be in order.
3. Flip over to the back of the hatch. You'll see there are two small tabs on each side of the back of the knob. Using a flat screw driver, push each tab across whilst pushing down on the back of the knob at the same time so it pops free.
4. Place the plastic washer on the back of the Caddy, ensuring the raised spigot sits upwards as pictured.
5. Insert the knob, pass it through the spigot and clip it into place. Ensure the knob can rotate freely in place.
6. Repeat for the other side.



Installation

7. If you haven't already removed the straps from your door, simply unclip and pull the strap out of its slot.

8. Insert the Caddy into the top slots, you'll hear it click into place.

If you already have a cage installed, pull gently on the top of the cage to allow a bit of room to insert the Caddy.

9. Turn the knobs sideways and insert them into the holes, then twist them 90 degrees to lock the knobs in position.

10. If you had a Rear Door Cage previously, ensure any screws removed are reinstalled.

11. That's it, you're done!



This page is intentionally left blank.



Local Knowledge & Assistance

We know half the fun of building your dream 4x4 is getting your hands dirty. But we also know that sometimes, things don't go to plan. If in the pursuit to build the ultimate setup you find yourself off-track, we're here to help you get unstuck.

For further information call 07 3180 1470 or email info@kaon.com.au

Disclaimer: The products sold by KAON should not be modified, and are for use only on the vehicles specifically stated. KAON will not be liable for any damages arising out of the use or misuse of its products. It is the customers responsibility to ensure the products are safely and properly used and installed. KAON consistently seeks to improve its products and reserves the right to make changes to any product.